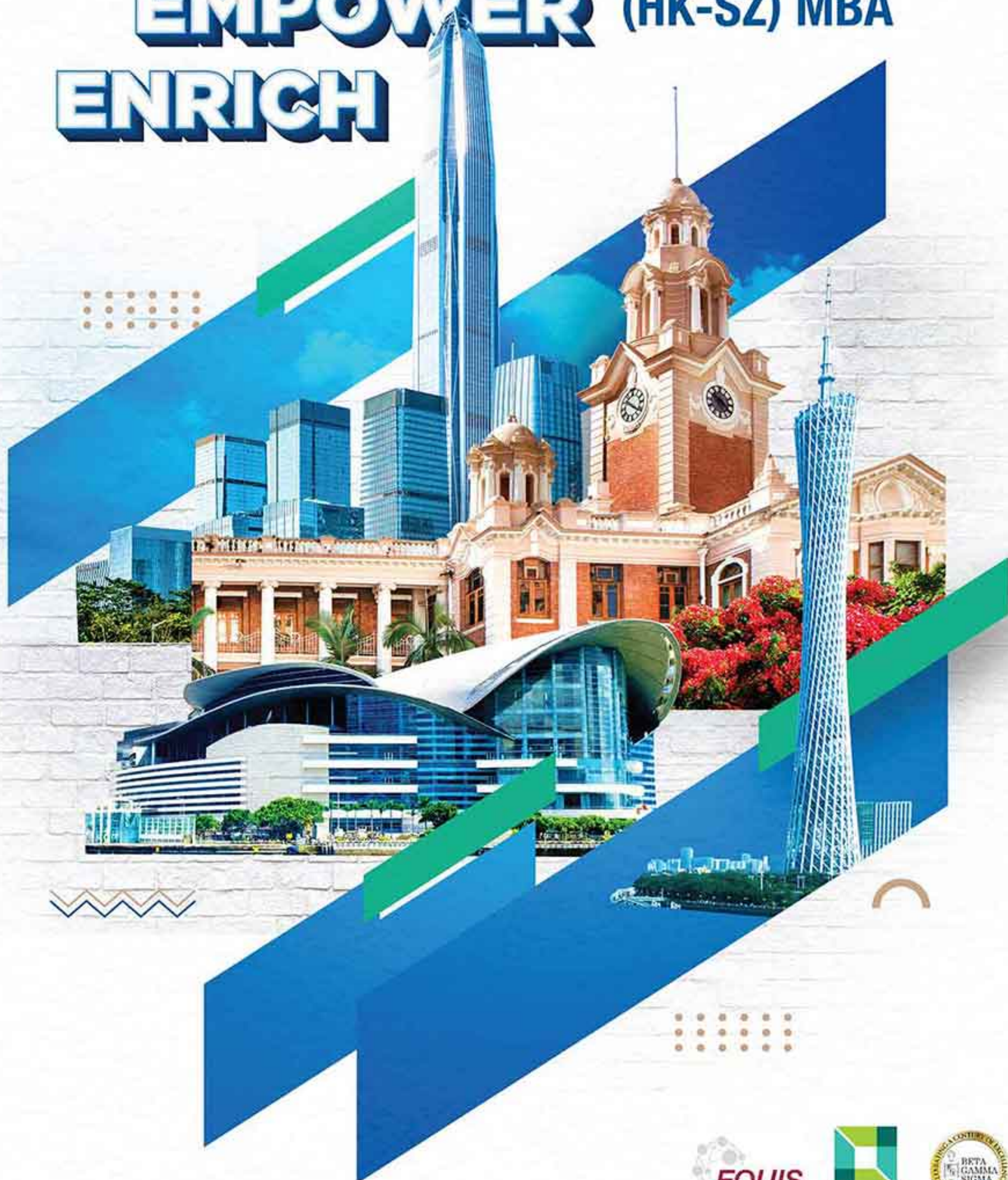


**ENHANCE  
EMPOWER  
ENRICH**

**PART-TIME GBA  
(HK-SZ) MBA**

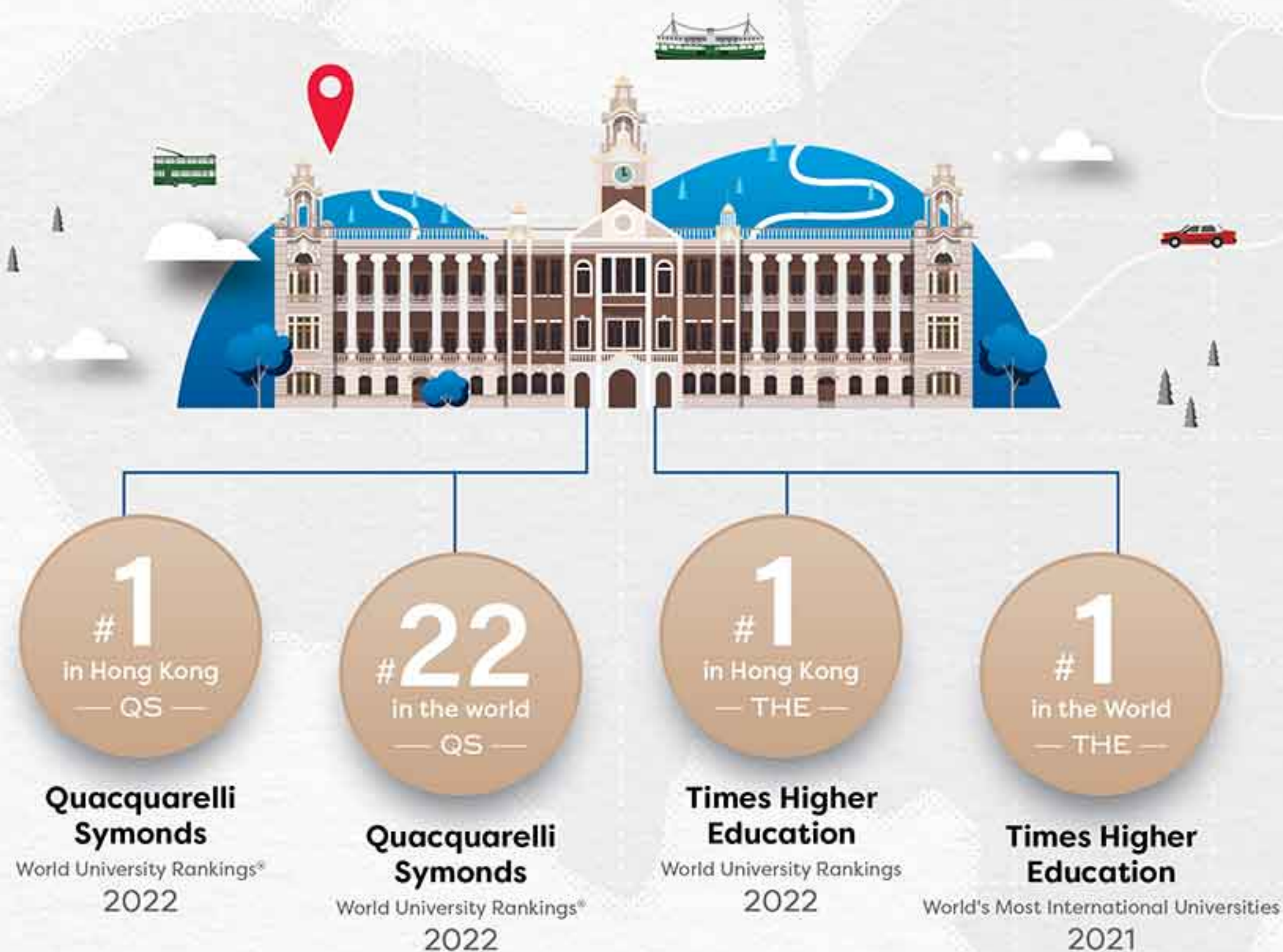




# HKU PART-TIME

## GBA (HK-SZ) MBA

### THE UNIVERSITY OF HONG KONG



### WORLDWIDE RECOGNITION HKU MBA





# BI-WEEKLY MODE

## in 2 YEARS

**10** + **6**  
Core Courses + Elective Courses

### Programme Structure

You are expected to complete the above courses within a minimum of 2 years (to a maximum of 4 years) in a 2-weeks modular structure, meaning you just have to concentrate on one single course in a given 2-weeks period.



### Year 1 & Year 2

Orientation

#### 4 Executive Development Workshops

- Business Communication and Presentation Skills
- Problem Solving and Critical Thinking Skills
- Managerial Leadership and Executive Presence
- High Performing Teams and Collaboration Skills

Asia focused core & elective courses

### Executive Development Workshops

A series of Executive Development Workshops have been created to encourage the students to fully engage in a unique learning experience, while sharpening their soft skills



The structure of the bi-weekly mode is designed for students to receive a comprehensive and rigorous learning within a 2-day period across alternate weeks. The no-class week will allow students to focus and debrief their learnings from the lectures, meeting with their cohorts for group assignments and most importantly, preparing themselves for the upcoming class week. This study approach will ensure our students receive an optimum learning whilst minimizing travelling.

### Study at both Hong Kong and Shenzhen campuses



- Courses are conducted on weekends bi-weekly
- 9:30 - 18:30**  
(Sat & Sun)

### Prime City Center's Location Of Our Shenzhen Campus



Broadcast and Television Building

Futian Subway Station

Shenzhen Stock Exchange

12000 square meters of venue

### 10 Core Courses

- Accounting for Business Decisions
- Analytics for Managers
- Business Ethics
- Capstone Project
- China and the Global Economy
- Competitive Strategy
- Corporate Finance
- Managing Digital Innovation
- Managerial Economics
- Marketing Strategy

### 6 Elective Courses

Our elective courses will be categorised into five themes



Students may also take up to two electives from Master of Science in Business Analytics, Master of Economics, Master of Finance, Master of Accounting, Master of Science in Marketing, Master of Global Management and Master of Finance in Financial Technology.



# HIGHLIGHTS

## Flexibility

Studying at your own pace, you can complete this MBA degree within 24 months whilst continuing your busy work schedule.



## Diverse and Contemporary Elective Selection

Your MBA electives are often taught by industry practitioners to bring in real-world experience and experienced professors to solidify your management framework. Our elective courses include: Artificial Intelligence for Business Leaders, Insights & Lessons: Reflections of a CEO, Online Business Strategy, Marketing for Tech-Intensive Industries, Introduction to FinTech & its Impact on the Future of Finance and Banking, International Field Project and so on.



## Modular Structure

The structure of the bi-weekly mode is designed for students to receive a comprehensive learning within a 2-day period across alternate weeks. The no-class week will allow students to prepare themselves for the upcoming class week. This study approach will ensure our students receive an optimum learning whilst minimizing travelling.



## The Entrepreneurship and Innovation Centre

The Entrepreneurship and Innovation Centre spans an estimated 3000 square meters, providing HKU students, alumni, and affiliated partners with resource support and a space for innovation. It also establishes a platform for interactive communication and self-improvement for talent in the Greater Bay Area. The affiliated partners include: China Resources, Bank of China, China Construction Bank, Qianhai Financial Holdings, DJI, BYD Company, Tencent, Huawei and etc.



## Entrepreneurial Incubation Lab

HKU MBA partners with Cyberport Academy, part of Hong Kong's largest start-up incubation hub to conduct the Entrepreneurial Incubation Lab course. The course aims to build up entrepreneurial mentality that leverage on the training, cultivate the capabilities of start-up founders to identify the market opportunities, and to engage in practical workshops to develop investor decks and present start-up pitch.



## Regional Perspective

Our Asia-Pacific focus will give you a distinct advantage in building your career in the region. The focus on Asia and China business renders the programme highly relevant to the wider region's dynamic, ever-evolving business environment.



## International Field Project

In the past few years, we have organised numerous international field trips to Asia, Europe and the US. International field project is an elective which helps our students understand business dynamics in different economies by visiting companies and institutions, and also speak with CEOs and top management of the visited companies.



## Case-Based Approach

The HKU MBA programme adopts an experiential-learning approach, with the extensive use of business cases that enables students to become effective problem solvers and decision makers. These cases are written by our own professors and are published by our renowned Asia Case Research Centre (<https://www.acrc.hku.hk/>).



## Networking and Bonding

Networking opportunities are one of the highlights of the programme. Students studying the GBA (HK-SZ) mode will experience networking and bonding opportunities alongside the Hong Kong Part-time mode and alumni when travelling to the city for their courses and workshops. Additionally, HKU MBA colleagues who are stationed at the Shenzhen Centre will also organise events regularly for students based in the Greater Bay Area to mingle with students from other Masters programmes and alumni under the business school.



## The London & New York Connection

There is a possibility for you to spend a semester at London Business School or Columbia Business School which offer great environments for business education along with international exposure.



## Alumni Lifelong Learning

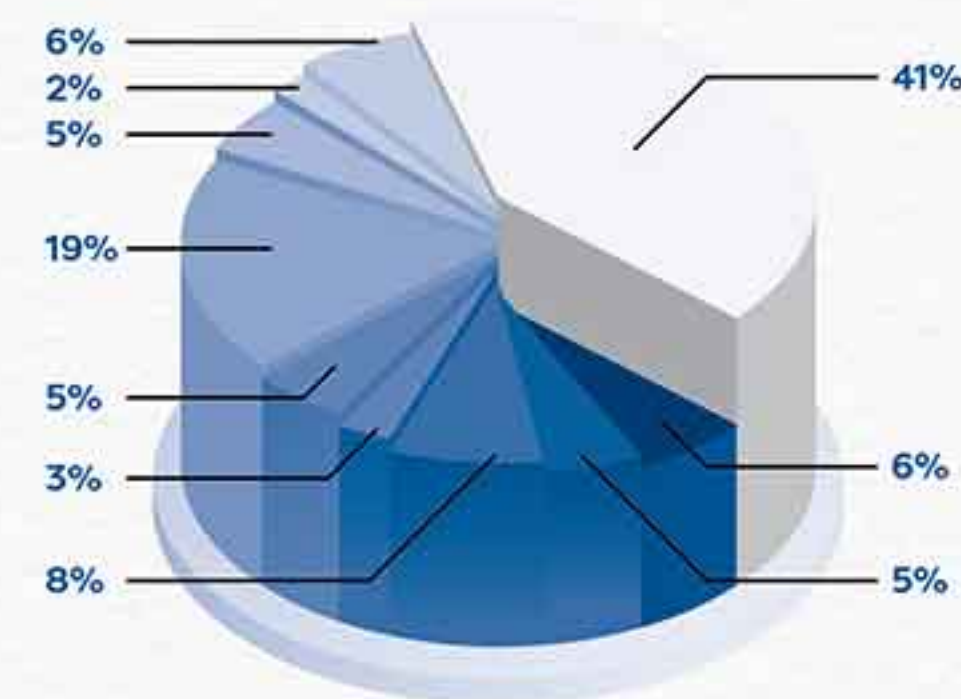
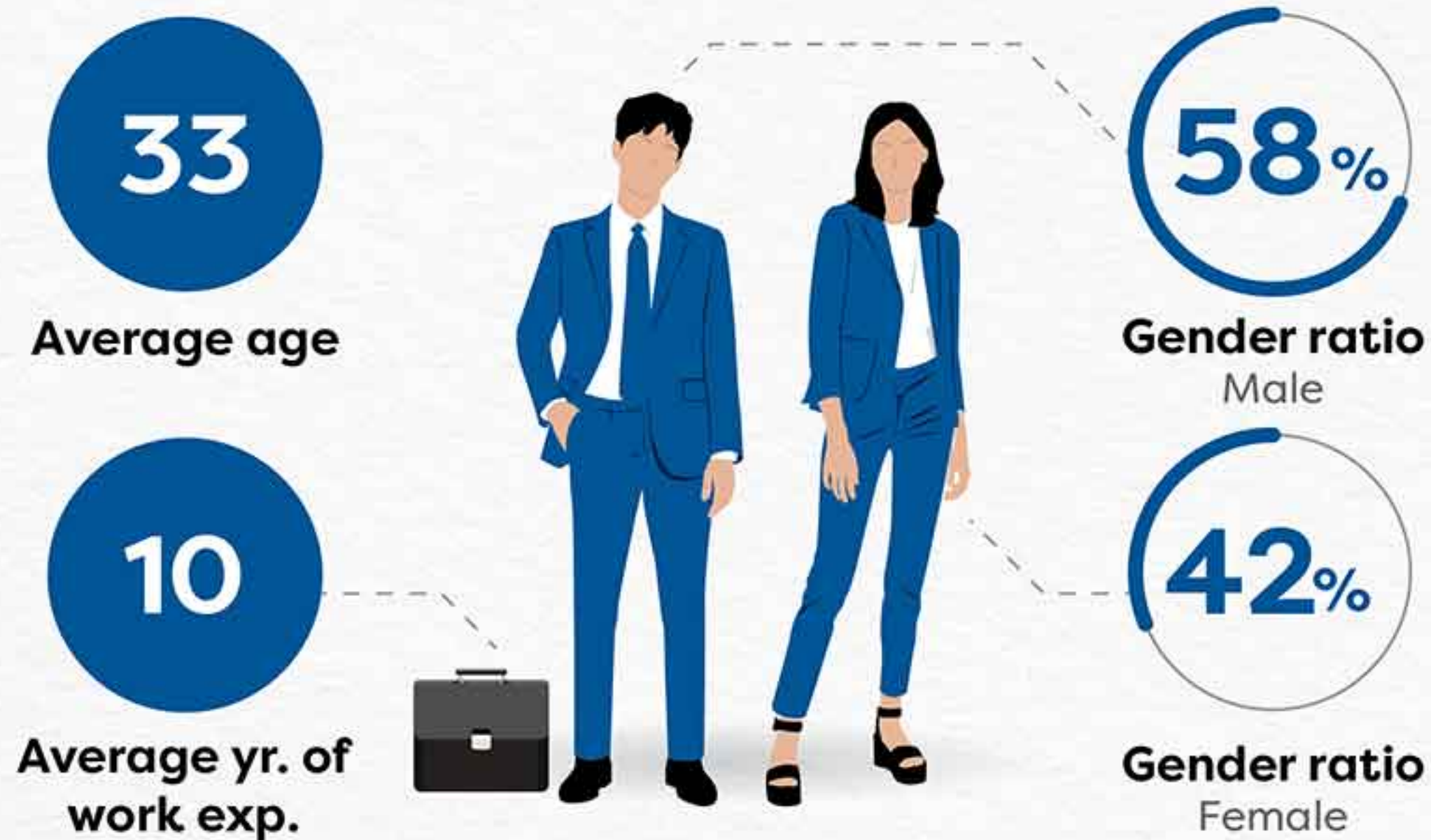
In order to equip our alumni with new knowledge and further strengthen their MBA networks, HKU Business School offers their alumni the chance to enroll in one elective per academic year to continuously enhance their knowledge and stay connected to the business school. No course enrollment fee will be charged.





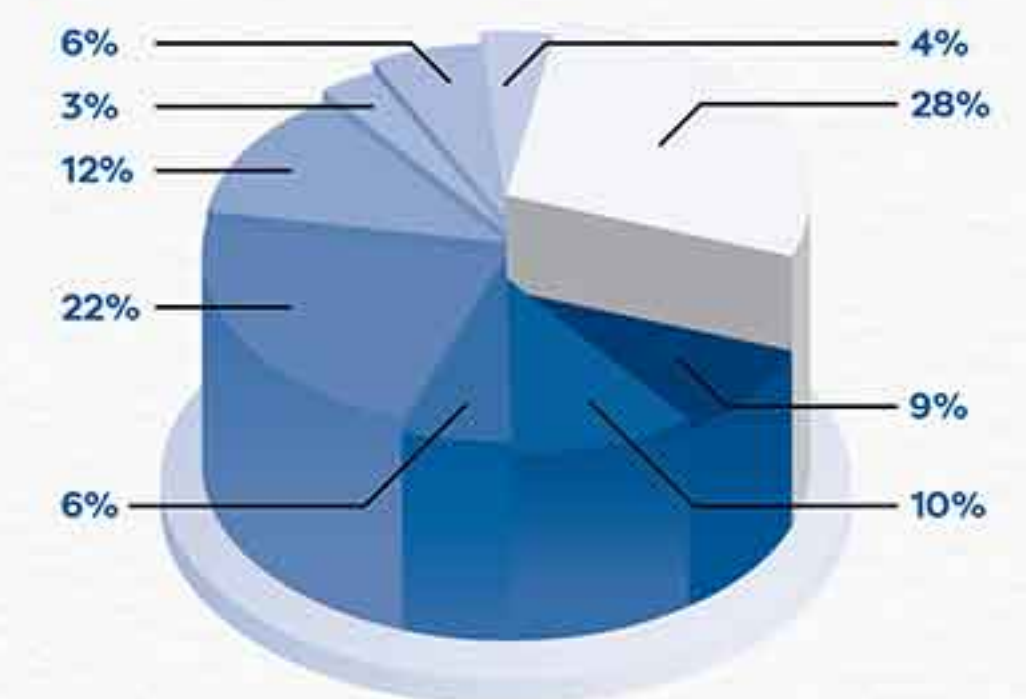


## Hong Kong Part-time MBA CLASS PROFILE — Class of 2022 & 2023 —



### Work Experience By Industry

41%	Banking, Finance, Accounting, Insurance
19%	Utility, Consumer Products, Manufacturing
8%	IT, Tech, Telecom
6%	Consulting, Advisory, Business Services
5%	Government, NGOs
5%	Real Estate, Property
5%	Supply Chain, Logistics, Aviation, Automotive
3%	Media, Advertising
2%	Healthcare, Pharmaceutical
6%	Others



### Work Experience By Function

28%	Finance, Audit, Accounting, Analyst
22%	Marketing, Branding, Business Development
12%	Strategy, Planning, Consulting, Professional Services
10%	General Management
9%	Operations
6%	Engineering, IT, Architecture
6%	Human Resources, Administration
3%	Merchandising, Sourcing
4%	Others



### Jinshan Hong

"Taking the part-time MBA is intense, challenging, but it is also very rewarding. I discovered from time to time that my work fuelled my curiosity for further learning and my studies unlocked greater possibilities in my work."



2022

## STUDENTS TESTIMONIALS

### Adam Wang

"Life is short so it's better to decide right away rather than overthinking the matter. If you want to have the international business visibilities and mindset to know more about the Asia markets then HKU MBA is the right choice."



2022



2021

### Celine Zhu

"I decided to complete my MBA journey on a part-time basis as I relocated to Hong Kong for work. I think it's a perfect opportunity for me to apply what I learned from class to my work immediately. I also appreciate the flexible schedules and options offered by the programme and I'm able to maintain the balance between career enhancement and academic growth."



### Kaifeng Huang

"My thinking is that you shouldn't use the MBA as only a stepping stone or just as a tool for advancement because you will be amazed by the amount of exposure you get from unexpected places."



2022



2022

### Max Sun

"Timing is the key to everything. Keeping abreast of current affairs and staying alert to the changes around you is essential."



### Jolly Gong

"We have core courses to provide me basic knowledge that helped me to better understand the prospectus and research reports in my daily work."



2022



# MBA LIFE

## ENGAGEMENT



- 1 Part-time MBA Alumni Panel
- 2 US Field Trip
- 3 Sake Tasting for HKU MBA Community
- 4 Talk on Walmart Story by Mr. Dirk Van den Berghe
- 5 Part-time MBA Orientation Day
- 6 Leadership Talk - Talk on Alibaba Story By Mr. Savio Kwan, Former COO of Alibaba
- 7 Craft Beer Experience
- 8 Leadership Talk
- 9 Yasha Desert Run
- 10 Annual Dinner
- 11 Graduation Dinner
- 12 Badminton Tournament
- 13 Asia Pacific Business School Blue Ice Trekking Challenge
- 14 France and Germany Field Trip
- 15 Company Visit - Hong Kong International Airport
- 16 Soap Cycling

## FOLLOW US



<https://mba-gba.fbe.hku.hk>  
 @ptgbamba@hku.hk / hkuszadmissions@business.hku.hk  
 (86 755) 8860 0739 / (852) 3962 1241  
 Room 204, Block B, Cyberport 4, 100 Cyberport Road, Hong Kong





# 2022 ADMISSIONS

## Requirements



- 1 Recognised bachelor's degree
- 2 Satisfactory GMAT/GRE/GRK score
  - \* Applicants with more than 7 years of postgraduate full-time work experience might be exempted from this requirement. Exemption, if any, will be considered on a case-by-case basis.
- 3 Minimum TOEFL 550 (paper-based) / 80 (internet-based) or IELTS overall band 6.0 (academic module), with no sub-test lower than 5.5
- 4 At least 2 years of postgraduate full-time work experience (as on September 2022)

## Tuition Fee



# HK\$468,000

HK\$468,000 payable in 6 instalments over 2 years. Subject to change and final approval by The University of Hong Kong.

## Scholarships



Merit-based scholarships are available for suitable Part-time GBA (HK-SZ) MBA mode candidates.

## Online application



<https://mba-gba.fbe.hku.hk/programmes/gba-mba/admissions/apply-now/>



# APPLICATION PROCESS



### Submit supporting documents

#### You should provide us with the following:

- Official/certified true copy of transcript(s)
- Certified true copy of degree certificate(s)
- Official GMAT/ GRE/ GRK report
- Official TOEFL/IELTS (academic module) score report
- A copy of your passport (page with photo)/ photo ID
- 2 referee reports
- Résumé

### Interview

Once online applications and supporting documents are submitted, the Admissions Committee will shortlist candidates for interviews.

### Admission decision

In general, the admission result will be available 2 to 4 weeks after the interview. The admission decision will be communicated through email once all the outstanding supporting documents are received. In exceptional cases, a conditional offer may be made subject to fulfillment of the GMAT/GRE/GRK and/or TOEFL/IELTS requirements.