



**HKU
BUSINESS
SCHOOL**

MBA
Programmes

PART-TIME GBA (HK-SZ) MBA



HKU PAI

GBA (HK)

THE UNIVERSITY OF HONG KONG



Quacquarelli Symonds
World University Rankings®
2024



Quacquarelli Symonds
World University Rankings®
2024



Times Higher Education
World University Rankings
2023



Times Higher Education
World's Most International Universities
2021-2023

RT-TIME -SZ) MBA



WORLDWIDE RECOGNITION HKU MBA

#1

in Hong Kong

Ranked 41st in Financial Times
- Global MBA Ranking 2023

#1

in Hong Kong

Ranked 19th in Poets&Quants
International MBA Ranking
2022-2023

(The P&Q list is a composite of the 4
most credible rankings, published by
The Financial Times, The Economist,
Bloomberg Businessweek, and Forbes)

#1

in Hong Kong

Ranked 38th in QS Global
MBA Rankings: Global 2023
- Top full-time MBA

#1

in Asia

For the 10th time
The Economist - Full-time
MBA Ranking 2010-2018 &
2022

#1

Worldwide

Times Higher Education and
The Wall Street Journal
Business School Report-2018
Top Tier: One-Year MBA
Degrees

HONG KONG TOP BUSINESS CENTRE IN ASIA AND THE WORLD

#1

Canada-based
Fraser Institute

Freest Economy
since 1996

#2

PricewaterhouseCoopers LLP
and the World Bank Group :
Paying Taxes 2020

Business-friendly Tax System

#3

The World Bank Group :
Doing Business
Report 2020

Ease of Doing Business

#4

The 2023 Global
Financial Centres
Index 33rd Edition

Global Financial Centre

#5

World Competitiveness
Rankings 2022

PART-TIME GBA MODE

in 2 years

10

Core Courses

+

6

Elective Courses



Programme Structure

You are expected to complete all the courses within a minimum of 2 years (to a maximum of 4 years) in a 4-day modular structure, meaning you concentrate on one single course in a given 5-week period.

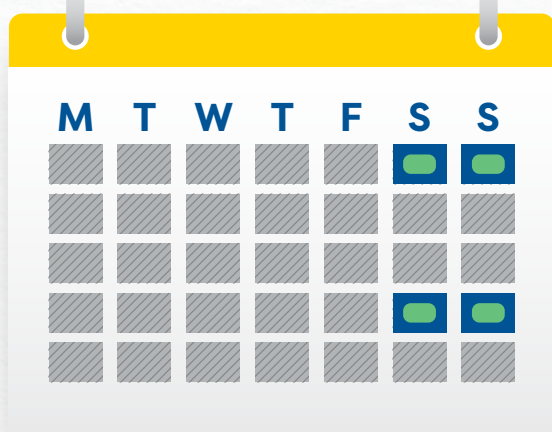
HK

SZ



Study at both Hong Kong and Shenzhen Campuses

Prime City Centre Location of our Shenzhen Campus



• Courses are to be conducted on weekends

9:30 - 18:30
(Sat & Sun)



Media Finance Centre

Futian Subway Station

Shenzhen Stock Exchange

Pengcheng 1st Road

12,000 square meters of venue

The Part-time GBA mode structure is designed for students to receive comprehensive and rigorous learning within a 4-day period every 5 weeks. The no-class weeks will allow students to focus and debrief their learnings from the lectures, meet with their cohorts for group assignments, and most importantly, prepare themselves for the upcoming class week. This study approach will ensure our students receive optimum learning while minimising travelling.

YEAR 1 & YEAR 2

Orientation

4 Executive Development Workshops

- Business Communication and Presentation Skills
- Problem Solving and Critical Thinking Skills
- Building Your Leadership Presence and Personal Brand
- High Performing Teams and Collaboration Skills

Asia-focused Core & Elective Courses

Executive Development Workshops

A series of Executive Development Workshops have been created to encourage students to fully engage in a unique learning experience while sharpening their soft skills



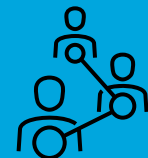
Business Communication and Presentation Skills



Problem Solving and Critical Thinking Skills



Building Your Leadership Presence and Personal Brand



High Performing Teams and Collaboration Skills

10 Core Courses

- Accounting for Business Decisions
- Analytics for Managers
- Business Ethics
- Capstone Project
- Competitive Strategy
- Corporate Finance
- Macroeconomics : Global Perspective
- Managing Digital Innovation
- Managerial Economics
- Marketing Strategy

6 Elective Courses

Our elective courses will be categorised into five themes



Business Tech and Innovation



Finance



Strategy and Consulting



Managing in China and Asia



Marketing and General Management

Students may also take up to two electives from: Masters of Science in Business Analytics, Master of Economics, Master of Finance, Master of Accounting, Master of Science in Marketing, Master of Global Management and/or Master of Finance in Financial Technology.

HIGHLIGHTS



Regional Perspective

Our Asia-Pacific focus will give you a distinct advantage in building your career in the region. The focus on Asia and China business renders the programme highly relevant to the wider region's dynamic and ever-evolving business environment.



Reputation & Recognition

HKU has established a solid reputation as a premier international university and a member of the global family of universities.



Modular Structure

The Part-time GBA mode structure is designed for students to receive comprehensive learning within a 4-day period every 5 weeks. The weeks with no classes will allow students to prepare themselves for the upcoming class week. This study approach will ensure our students receive optimum learning while minimising travelling.



Flexibility

Studying at your own pace, you can complete this MBA degree within 24 months whilst continuing your busy work schedule.



Case-Based Approach

The HKU MBA programme adopts an experiential learning approach, with extensive use of business cases that enable students to become effective problem-solvers and decision-makers. These cases are written by our own professors and published by our renowned Asia Case Research Centre (www.acrc.hku.hk).



Diverse & Contemporary Elective Selection

Your MBA electives are often taught by industry practitioners and experienced professors to bring in real-world experiences and help solidify your management framework. Some of our elective courses include ESG, Sustainable Finance and Impact Investing, Managing Black Swans, Artificial Intelligence for Business Leaders, Insights and Lessons – Reflections of a CEO, and Online Business Strategy.

Alumni Lifelong Learning

HKU Business School offers its alumni the chance to enrol in one elective course per academic year to equip them with new knowledge, further strengthen their MBA networks, and stay connected to our business school. No course enrolment fee is charged.



The Entrepreneurship & Innovation Centre - Yuan Valley

The centre spans an estimated 3000 square meters, providing HKU students, alumni, and affiliated partners with resource support and a space for innovation. It also establishes a platform for interactive communication and self-improvement for talents in the Greater Bay Area. Some of the affiliated partners include the Bank of China, China Construction Bank, China Resources, Qianhai Financial Holdings, DJI, BYD Company, Tencent, and Huawei.



Entrepreneurial Incubation Lab

HKU MBA partners with Cyberport Academy, part of Hong Kong's largest start-up incubation hub to conduct the Entrepreneurial Incubation Lab course. The course aims to cultivate capabilities of start-up founders to identify market opportunities and help students build up an entrepreneur's mentality that leverages the training. It also engages them in practical workshops to develop investor decks and present start-up pitches.

International Field Project

In the past few years, we have organised numerous international field trips to Asia, Europe, and the US. International Field Project is an elective that helps students understand business dynamics in different economies by visiting companies and institutions, and also speaking with CEOs and top management of the visited companies.



Networking & Bonding

Networking opportunities are some of the highlights of the programme. Students studying the GBA (HK-SZ) MBA Programme will experience networking and bonding opportunities with the Hong Kong Part-time MBA students and alumni when travelling to the city for their courses and workshops. Additionally, HKU MBA colleagues at the Shenzhen Centre will also organise events regularly for students based in the Greater Bay Area to mingle with students from other Masters Programmes and alumni at the business school.

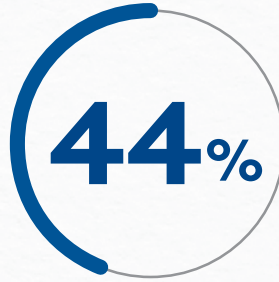
Part-time GBA (HK-SZ) MBA

CLASS PROFILE

— Class of 2025 —



Average age



Gender ratio

Male



Indicative Range of
Work Experience

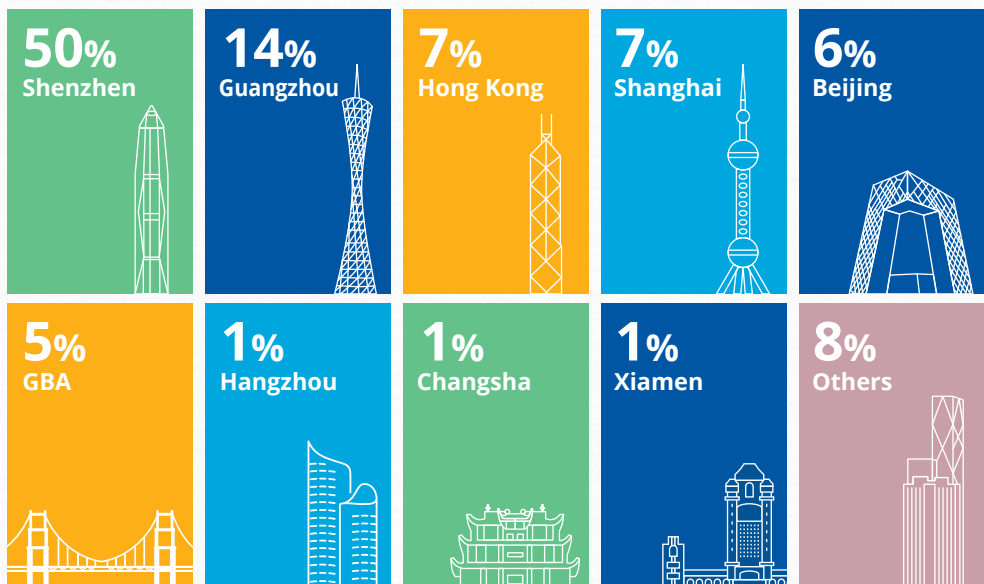


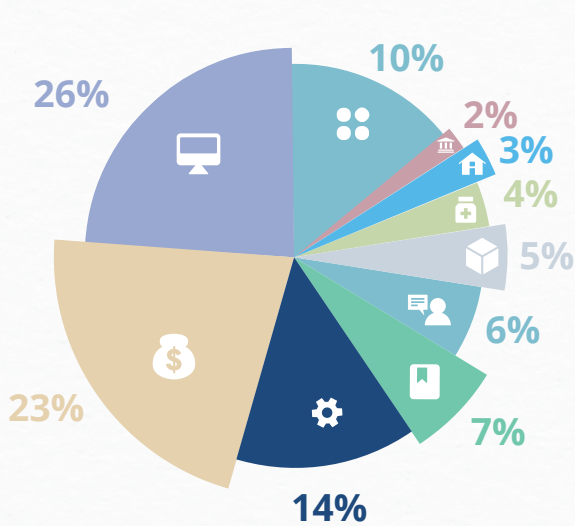
Gender ratio

Female



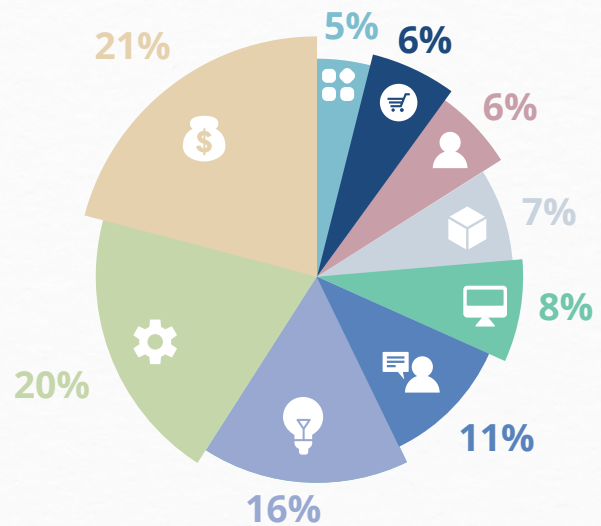
Location





Work Experience by Industry

| | |
|-----|---|
| 26% | IT, Tech, Telecom |
| 23% | Banking, Finance, Accounting, Insurance |
| 14% | Utility, Consumer Products, Manufacturing |
| 7% | Media, Advertising, Education |
| 6% | Consulting, Advisory, Business Services |
| 5% | Supply Chain, Logistics, Aviation, Automotive |
| 4% | Healthcare, Pharmaceutical |
| 3% | Real Estate, Property |
| 2% | Government, NGOs |
| 10% | Others |



Work Experience by Function

| | |
|-----|---|
| 21% | Finance, Audit, Accounting, Analyst |
| 20% | General Management, Innovative Transformation |
| 16% | Project Operation, Project Management |
| 11% | Strategy, Planning, Consulting, Professional Services |
| 8% | Engineering, Architect, IT |
| 7% | Merchandising, Sourcing, Supply Chain Management |
| 6% | Human Resources, Administration |
| 6% | Marketing, Branding, Business Development |
| 5% | Others |

Companies (Partial)

| | | | | | | |
|--------------------|-----------------------|-------------------------|---------------------------|------------------------------|----------------------|-----------------|
| HUAWEI | TENCENT | LENOVO | PING AN BANK | BAI DU | VIVO | DIDI |
| Standard Chartered | China Resources | DJI | HONOR | IBM | ANTA | OPPO |
| DBS | China Southern | China Construction Bank | Xiamen International Bank | Shanghai Industrial Holdings | China Merchants Bank | SHIMAO Group |
| CICC | Greentown Overseas | ABB | WeBank | Nike | Skechers | SF Express |
| Heytea | Gdh Guangnan Holdings | CRCC | Shell | Apple | AMAZON | P&G |
| Morgan Stanley | Walmart | Shopee | ZIJIN MINING | China Mobile | Yingke Law Firm | Alibaba Group |
| ByteDance | JLL | UnionPay | BEEPLUS | State Grid | China Minsheng Bank | Johnson&Johnson |

Leung Ka Wai - Joanna

Executive Director,
Kafelaku Coffee Industrial Holding Limited

"It is a great honor to be a member of the HKU MBA family. Hong Kong is an international metropolis with diverse cultures, and HKU is a world-class and highly recognised university. I believe that here, I can not only learn international advanced business management knowledge, but also communicate with professionals from different backgrounds and cultures. I look forward to meeting like-minded people, working collaboratively on new ideas, and exploring new possibilities in our respective fields."



Wu Hao - Andy

Executive Director
J.P. Morgan

"When my CEO wrote my reference letter for the HKU GBA MBA Programme, he said that an MBA programme offered by a top university would make me more valuable, equipping me with the knowledge and skills I need for my future career. The programme will also allow me to dedicate time and resources to reviewing past work, looking at where I went wrong and where improvements can be made. I am thrilled to have the opportunity to be part of the HKU GBA MBA Programme."



STUDENT TESTIMONIALS



2025



2025



2025



2025

Deng Yang

CEO
Huiyang Media (Wuhan) Co., Ltd

"For me, the HKU GBA MBA is not just a major, but a culmination of seven years of hard entrepreneurial experience. The programme can improve our entrepreneurial ideas, help us explore the secrets of the business world, establish strategic thinking, and understand and master solutions. Upon completing the programme, I will be well prepared to be a socially responsible entrepreneur."



Chen Hong - Cyndi

Manager of Corporate banking department
Tai Fung Bank Limited

"HKU is one of the top universities in the world, and it has always been my dream to be a student here. Now, my dream has finally come true and I am a member of the GBA MBA programme. I look forward to achieving my goals alongside excellent colleagues on my MBA journey, and I hope we can always keep the love of learning, and reach new life milestones together."



Cheung Kin Tung - Ryan

VC Investor
Energy Tech, CLP Innovation Venture

This GBA MBA programme offers unparalleled exposure to both the China and international markets, providing a versatile platform for me to gain cutting-edge management knowledge from esteemed faculty and classmates from diversified backgrounds. HKU's case-based pedagogy with focus areas on strategy, consulting, and business innovation is also instrumental in supporting my professional pursuits and accentuating my skills as a dynamic leader.



2025



2025

Zhao An - Andy

VP of ANTA Overseas BU

"Returning to study as an MBA student after accumulating over twenty-years of experience in sales, the most important thing for me is to further enhance my relevant cognition and capability. I believe through such an amazing platform, the HKU GBA MBA programme, I can reshape my brand and find a new development curve in the next decade."



Jiang Yunhan - Kevin

Strategy Director
OPPO

"The HKU GBA MBA Programme is a global-visioned, local-based study and networking programme in the Greater Bay Area. Through both theoretical and practical study, the programme eliminated my blind spots in management knowledge and helped me construct my own systematic framework of general management. Furthermore, the activities both in and outside of class connected me with like-minded friends, preparing me for my long-term professional career and entrepreneurship."



2025



2025

Wang Wenbin

Executive Principal
Malvern College Qingdao

"Having academic freedom has allowed HKU to gather top scholars from around the world, and I've benefited greatly from their profound insights in diverse fields. I have been longing to join such an elite group, and now I am honored to be part of it. I am passionate about communicating and learning with my classmates, and sharing the codes to success and excellence. At the same time, I enjoy the life of commuting between Hong Kong, Shenzhen and Qingdao, enriching myself in the fast-paced life. Choosing HKU has not only broadened my life horizons, but given me more conviction to move forward."





France and Germany Field Trip



Shenzhen Annual Dinner



Banking Alumni Panel

MBA LIFE ENGAGEMENT



Soap Cycling



Orientation Day



MBA Class



Alumni Sharing



Craft Beer Experience



Fitness Session



Yasha Desert Run



Shenzhen Cocktail Making Event



Team Building



Part-time MBA Alumni Panel



Networking Event



US Field Trip



Badminton Tournament

FOLLOW US

 HKUMBA01

 香港大学 MBA

 HKU MBA

 HKU_MBA

 香港大学 MBA

 @HKU_MBA

 HKUMBAOfficial

 香港大学 MBA

 香港大学 MBA

Chat With Us

Website



➤ <https://mba-gba.hkubs.hku.hk/programmes/gba-mba/overview/>
@ptgbamba@hku.hk / hkuszadmissions@business.hku.hk
☎ (852) 3962 1241 / (86) 755-8308 8629
🏠 Room 204, Block B, Cyberport 4, 100 Cyberport Road, Hong Kong
🏠 HKU Business School Shenzhen Campus, Media Finance Centre, Futian District, Shenzhen

2024 ADMISSIONS



Requirements

- 1 A recognised bachelor's degree
- 2 Satisfactory GMAT/GRE/GRK score
* Applicants with more than 7 years of postgraduate full-time work experience might be exempted from this requirement. Exemption, if any, will be considered on a case-by-case basis.
- 3 Minimum TOEFL score of 550 (paper-based)/80 (internet-based) or IELTS (academic module) overall band score of 6.0, with no subtest lower than 5.5.
- 4 At least 2 years of postgraduate full-time work experience (as of September 2024).



Tuition Fee

HK\$510,000

HK\$510,000 payable in 6 instalments over 2 years. Subject to change and final approval by The University of Hong Kong.



Scholarships

Merit-based scholarships are available for suitable Part-time GBA (HK-SZ) MBA candidates.



Online application

<https://mba-gba.hkubs.hku.hk/programmes/gba-mba/admissions/apply-now/>

The Part-time GBA(HK-SZ) MBA offers Bilingual Class this year. Applicants can apply online.



APPLICATION PROCESS



Submit supporting documents

Interview

Admission decision

You should provide us with the following:

| |
|---|
| Official/certified true copy of transcript(s) |
| Certified true copy of degree certificate(s) |
| Official GMAT/GRE/GRK score report |
| Official TOEFL/IELTS (academic module) score report |
| A copy of your passport (page with photo)/ photo ID |
| 2 referee reports |
| Résumé |

Once online applications and supporting documents are submitted, the Admissions Committee will shortlist candidates for interviews.

In general, the admission result will be available 2 to 4 weeks after the interview. The admission decision will be communicated via email once all the outstanding documents are received.

In exceptional cases, a conditional offer may be made subject to fulfilment of the GMAT/GRE/GRK and/or TOEFL/IELTS requirements.